

An abstract artwork featuring a face-like shape composed of various black ink splatters, blotches, and expressive brushstrokes on a white background. The splatters are concentrated in the upper and lower portions, suggesting eyes and a mouth, while the center is mostly white space. The overall effect is one of raw, emotional expression.

Abstract Transpersonal Expressionist

JAMES E. WOODY IS NOW ACCEPTING SELECT COMMISSIONED ASSIGNMENTS.

Art collecting continues to stem from appreciating aesthetics, supporting creativity and securing long-term investments.

It's long been a maxim that has defined the philosophical relationship between a collector and their art. This motivation to acquire or commission great works of art has taken many forms since the advent of the Renaissance patronage. For the royal courts, it was power and prestige; for the aristocracy, recreation and pleasure; for the great industrialists, cultural refinement; and for the avant-garde, social stratification.

To better understand the nuanced and evolving relationship between the art collector and their collection, a 2016 U.S. Trust study surveyed 684 wealthy individuals, 30 percent of whom had greater than \$10 million in investable assets. The results revealed an interesting generational divide between more traditional collectors, still driven by connoisseurship and aesthetic pleasure and the next-generation collectors who are increasingly concerned with how art behaves as a capital asset.



BE SENSITIVE ART STUDIO

Private Invitation

The following philanthropists are
art champions with at least one
thing in common.

George Clooney

Melinda Gates

Bill and Hillary Clinton

Ivanka Trump

Kerry Washington

Sandra Sandberg

Angelina Jolie

Queen Latifah

They all own a Woody Painting

“Woody” has been painting for over
three decades, most of his work has not
been made public.

Woody’s paintings are owned & sought after by eclectic,
visionary and informed art collectors and champions of
philanthropy via the **Be Sensitive Art Gifting Project**.

IMAGINE THE POSSIBILITIES.

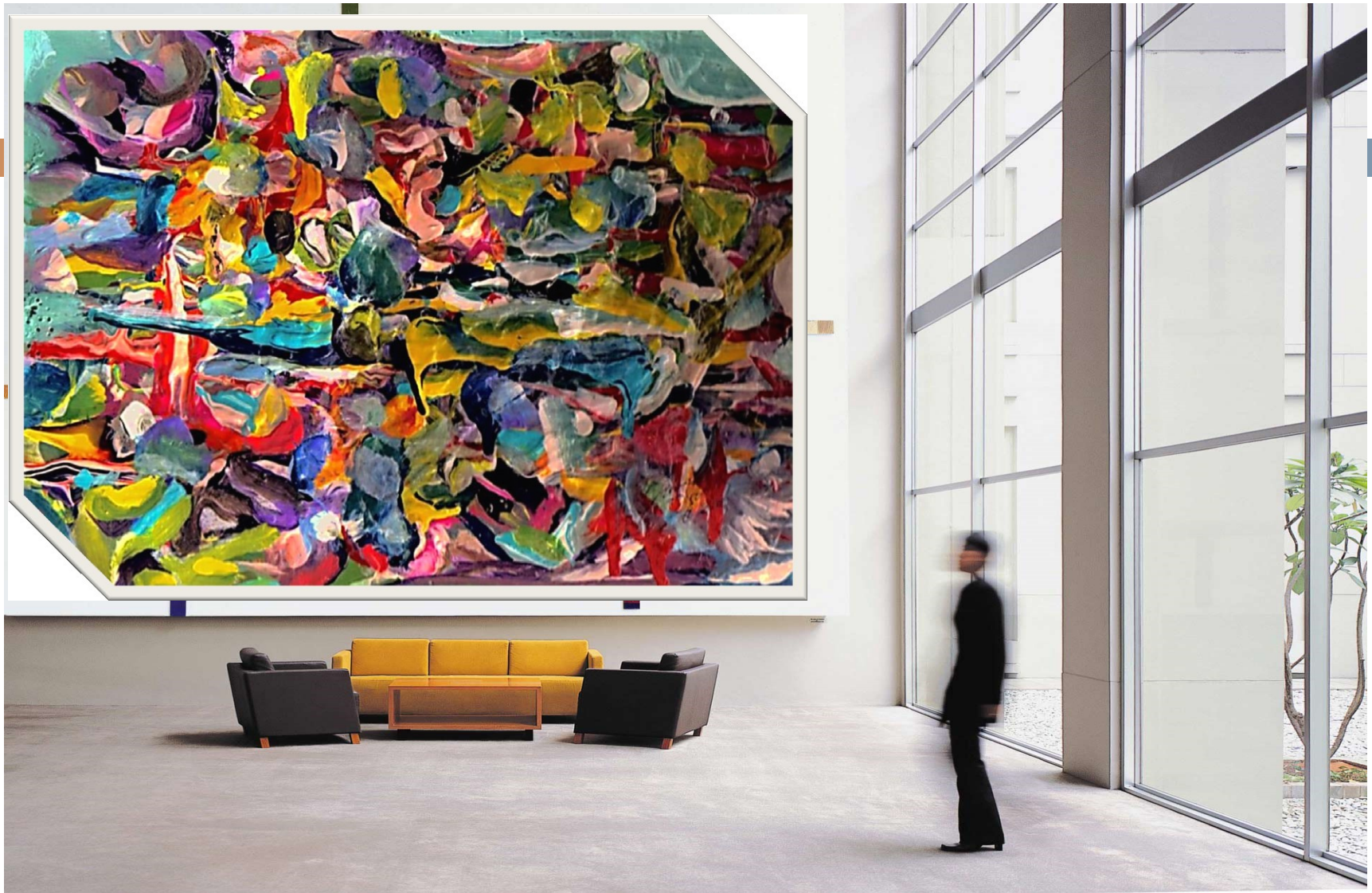
Woody deploys psychology design principals as an intricate tool for creating his painting.

Design Psychology (n): the practice of architecture, planning and interior design in which psychology is the principal design tool.

Although the bond between interior design and our emotions has gained much attention in the last decade, this form of environmental psychology exists for thousands of year now – the Indian Vastu Shastra, the Chinese Feng Shui, etc. Because of the rise of neuroscience, scientists are doing plenty of research on this topic and finding the most incredible results. They have shown the ability of interior design elements to evoke positive or negative emotional response in people. These findings open the door to design spaces that consciously manipulate decorative elements with the goal of encouraging creativity, peace and happiness.

According to the Journal of the Association for Psychological Science, certain rooms can produce very tangible emotions. It further proved that people are more creative and focused in rooms with the right artwork. Also moods are significantly improved, they experience reduced stress, enhanced concentration and memory retention with the presence of natural elements.

According to what we know about color psychology, vibrant shades encourage socializing and communicating, Woody's painting can generate or enhance certain emotions deeply rooted in our minds.



Woody's paintings are not drawings, they are action art, spontaneous reactions to colors, textures and space.



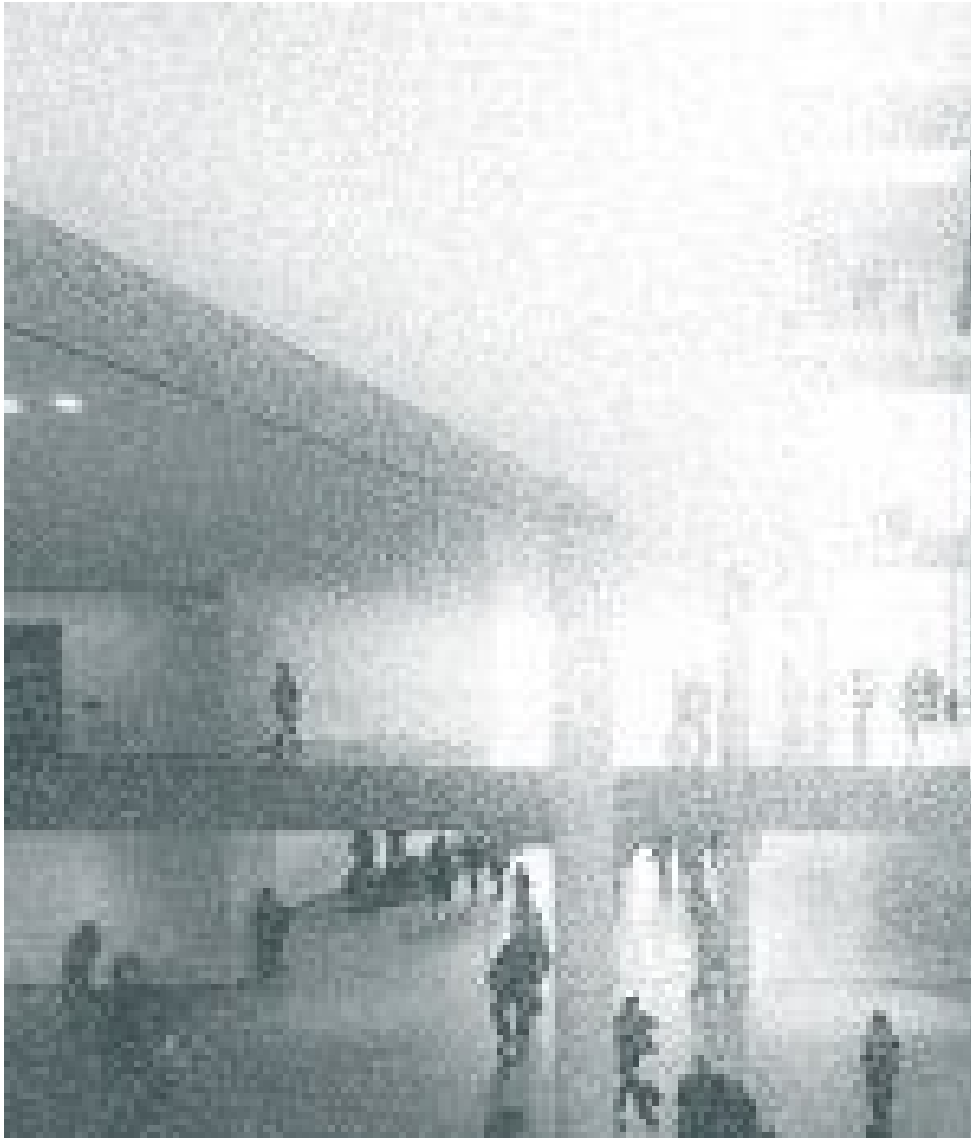
“Transpersonal Art accurately reflects the multiplicity of our reality, by expressing the realm of our primary meaning, a universal mode of consciousness that envisions life as sacred.

My paintings incorporate elements of Transpersonal Art as the symbolic reenactment of the abstract imagination, images of a timeless and internal universe that are reflective in accordance with the knowledge of our time, organic expressions that demonstrate the eternal magic of the human condition.

These images may appear mystical, literal or conceptual, because the abstract elements vary as representation of the known, the less known, and the unknown.

Whether you view Transpersonal Art as simply a mirror of ordinary biological urges or as contact with other worlds filled with living beings, what is certain, is they are our collective dreams and visions, the dramatic personae of your own imagination realized as an independent entity with a life of its own.“

James e. Woody



Synopsis

In recent years, there have been an increasing number of scientific investigations into art, exploring what actually happens in the brain during the creative process. Most of these collaborations have been based in neuroscience and psychological approaches to how art is perceived, produced and created.

Studies have yielded important new information that relates to a very basic fact of human biology: all behavior, even that as complex as creativity, can be linked to brain function. Building on this fundamental linkage, the neurobiology of art promises to yield exciting new insights as this research field evolves. Creative behavioral patterns are likely to be a critical component for developing the neurological capacity for innovation.

The Neuroscience of Art: What are the Sources of Creativity and Innovation? program brought together an inspiring and unusual mix of 50 artists, scientists, physicians, psychologists, sociologists, scientific agency representatives, educators, and entrepreneurs from across the globe to explore this rapidly-evolving field of the neurobiology of art and to create a collaborative international platform to identify and address emerging issues at the creative intersection of neuroscience and art.



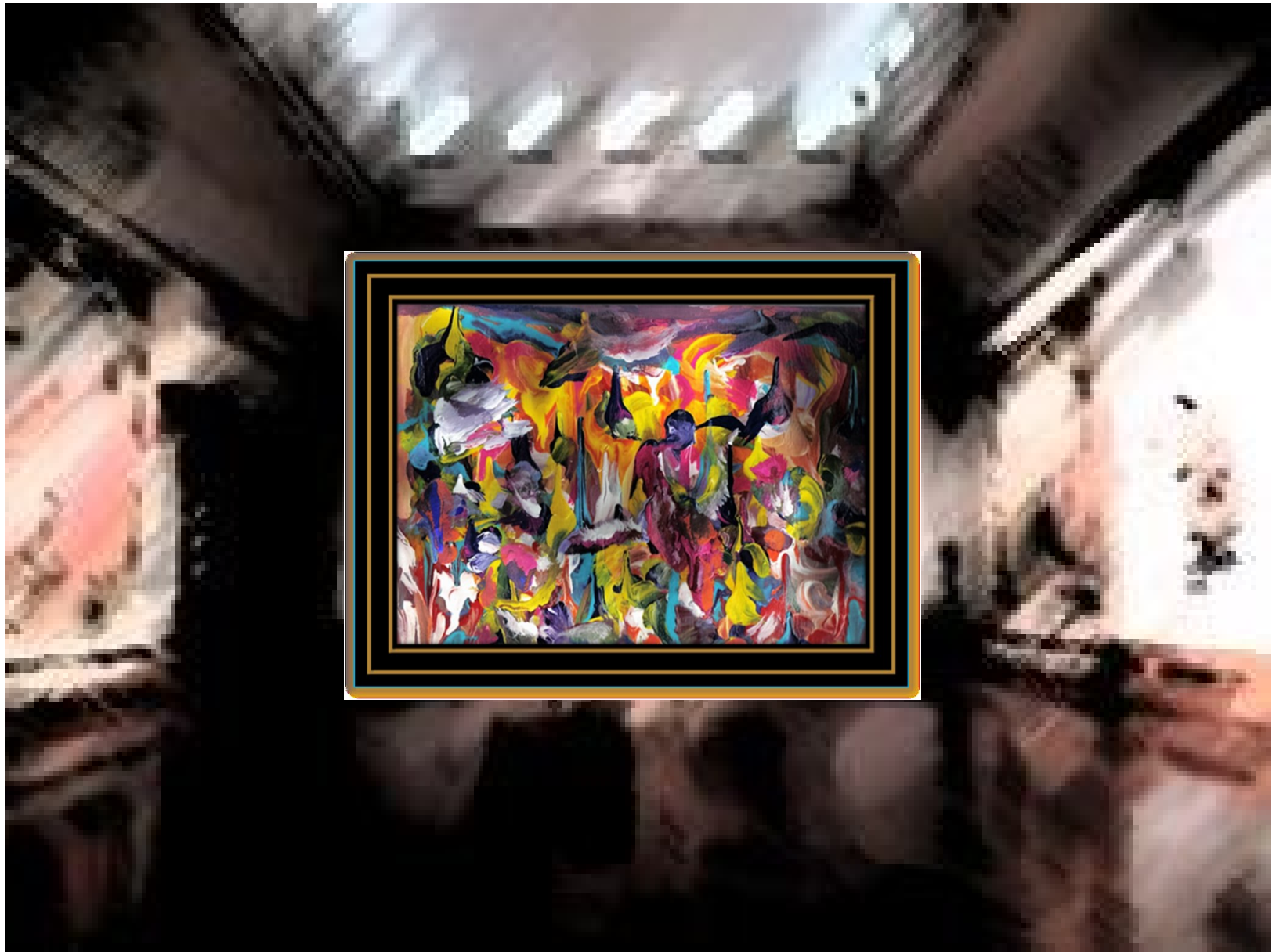




















What type of clients/assignments is Woody accepting?

- Commissioned assignments can include commercial properties: hotel lobbies, restaurants, corporate headquarters and other luxury facilities.
- Public spaces can include, but not limited to: airports, theaters and other secured environments.

How much does a commissioned Woody cost?

- The cost of engagement is based on a number of factors; the type of facility, size of the artwork, if work is performed on or off site and materials used.

What are the basic terms of engagement?

- Although we have referral agreements with various agents, all engagements are contractual between the artist and the end buyer, we do not enter into third party obligations.
- All assignments require a 25% deposit and the total contracted amounts must be funded through escrow.







LET'S START WITH A CONVERSATION.

Thank you.

Amy.Wiesenthal(at)BeSensitiveStudio.com

BE SENSITIVE STUDIO