



RIGHT IN FRONT OF YOUR FACE

# James e. Woody

“We live in the light of the living not on the streets of the forgotten, having done so much in so little time, I’ve learned to treasure my inch of it”.



## Introduction

**JAMES E. Woody** is an accomplished self-taught visionary painter, a concept developer and communicator of new ideas.



“Woody”, one of the world's first proclaimed and recognized Abstract Transpersonal Expressionist Artist.

Woody plumbs a world of ideas found in philosophy, psychology, anthropology, and ancient cultures, mythology and literature to find inspirations for his work.

“Abstract Transpersonal Art accurately reflects the multiplicity of our reality, by expressing the realm of our primary meaning, a universal mode of consciousness that envisions life as sacred.

My paintings are the symbolic reenactment of my imagination, images of a timeless and internal universe that are reflective in accordance with the knowledge of our time, organic expressions that demonstrate the eternal magic of the human condition. These images may appear mystical, literal or conceptual, because the abstract elements vary as representation of the known, the less known, and the unknown.

Whether you view my work as simply a mirror of ordinary biological urges or contact with other worlds filled with living beings, what is certain, is they are collective dreams and visions, the dramatic personae of independent entities with a life of their own.”

*James e. Woody, 1988*

Woody's paintings have been defined as sensory, a realm for your eyes to perceive and remember a redeeming philosophy of intention, preparation and possibilities.



Woody's paintings not drawings, they are organic memories in a garden of colorful human emotions; spontaneous reactions to color and movement with an array of passions reflecting our collective imagination.







Woody's paintings are derived from his life experiences, his persona encapsulated into abstract transpersonal expressionism.



Woody paintings are a collective mirror of hope, they show us that his journey was not always easy, but rather the fruits of suffering and self-sacrifice, yet there is a redemption made possible by a higher dimensional entity.



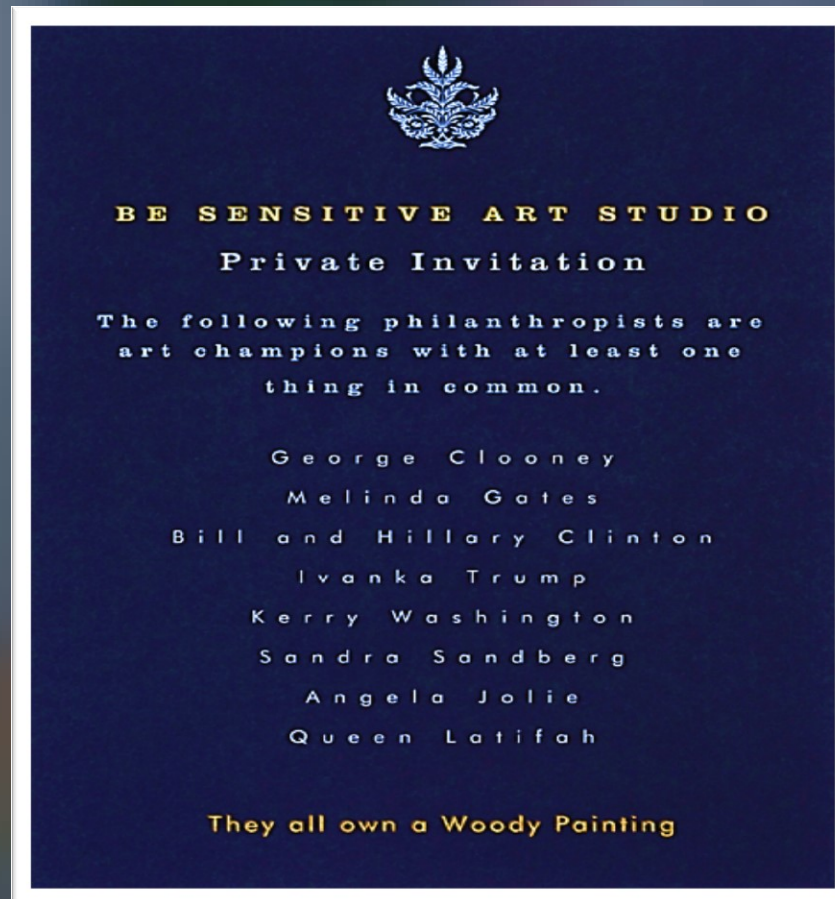


**“I’m always looking to partner with a visionary arts patron seeking to grow their philanthropic impact”.**

James e. Woody, Be Sensitive Studio



Woody's paintings are owned & sought after by informed eclectic art collectors and champions of philanthropy.



Although Woody's life story could be considered an editorial on America's habitual thoughts, wishes and expectations, it's **not**.

Woody currently a resident of Charlotte, N.C., was born in Newark, N.J., when the U.S. Supreme Court ushered in the integration of America's public schools.

This is not a history lesson, but we would be remiss not to mention a few significant social events of human liberty that significantly became the cornerstone that define his youth, development and perspectives, including: the Civil Rights Movement of the 1960's; the Vietnam War; the fall of the Berlin Wall; assassinations of our beloved John and Robert Kennedy, Medgar Evers, Martin Luther King Jr., and Malcolm X, just to name a few.

He stands witness to the redefinition of the American experience when Joseph L. Searles is named a member of the New York Stock Exchange; Thurgood Marshall is appointed U.S. Solicitor General; Lt. Col. Guion S. Bluford Jr. and Dr. Mae C. Jemison became the first African American Astronauts; General Colin Powell defies the odds to become Head of the U.S. Joint Chiefs of Staff; Muhammad Ali is forever known as the greatest; Nelson Mandela was freed after 27 years in prison and the world is awakened to Barack Hussein Obama, 44th President of the United States of America.



Woody has been painting for decades, even still, most of his work has never been displayed to the public.



The following pages illustrate a few projects that Woody has previously or currently been involved.

## Overview



It's impossible to recapitulate Woody's life in this allocation of time and space, for his is a story of reinvention and perseverance, a story about what happens in life and what happened to life during his lifetime.

His vision and creativity have touched the world with differences and indifferences and often collide with every new interpretation.





Woody began his “career” in the mid-1970’s, breaking records and barriers as one of the youngest African American’s in various industries.

### Malcolm Dunn Advertising



Located on Madison Avenue in New York, MDA was one of the first direct response marketing agency’s for McGraw Hill Publishing.

Woody, began his “career” with MDA during it’s start-up stage as one of the youngest account executives in the direct response industry.

### Cheeseborough-Ponds



Located in Greenwich, CT. Prince Matchabelli was the cosmetic and fragrance division of Cheeseborough-Ponds.

Woody, join the company as the youngest and one of their first African American territory managers.

In 1978, Woody was discovered by G.Q. Magazine and became one of the first African-American men to appear in five (5) consecutive editorial issues.

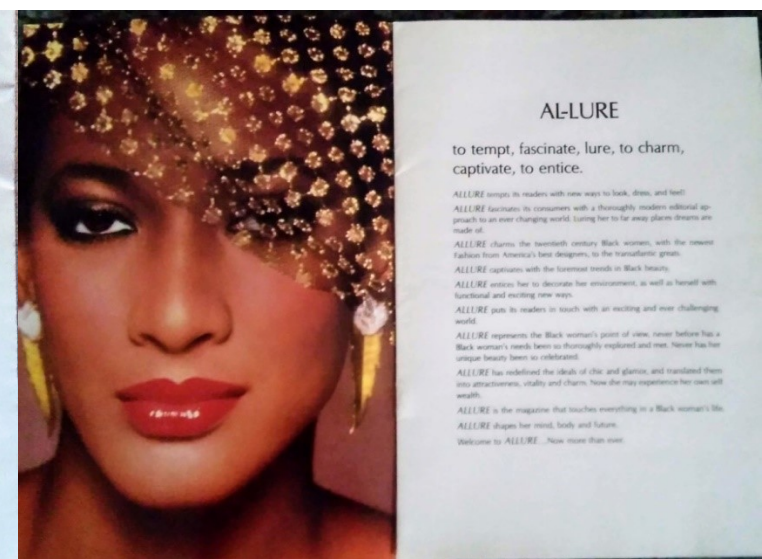
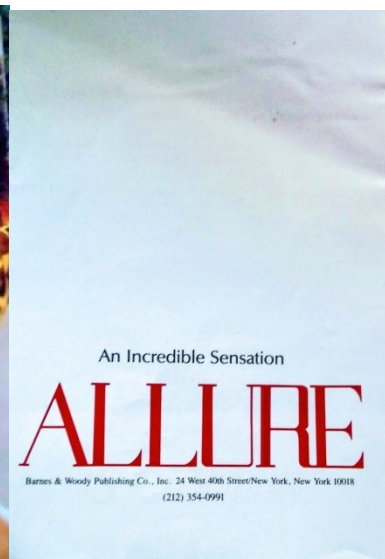
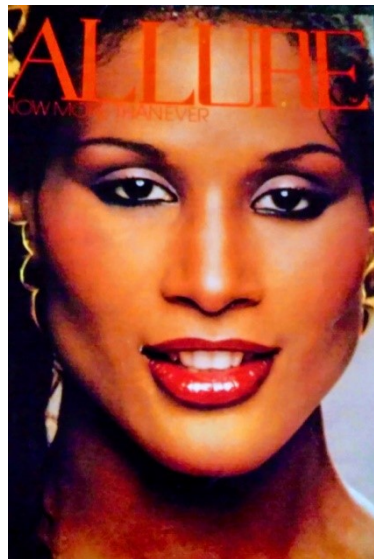


Woody's modeling assignments included Giorgio Armani, Yves Saint Laurent, Bill Kieserman, Gianni Versace, Linea Pitti and various other renowned fashion designers.



Editorial and commercial appearances have included some of the most well-known brands in the world.

In the early 1980's, Woody set his sights to publishing a fashion and beauty magazine for international women of color.





Woody was afforded the privilege of helping to define the introduction of Internet access to the hospitality industry and wireless network devices within medical environments.

- **Hotel Digital**



- **Wireless Intelligent Networks**



## During the early-1990's, Woody was awakened by the implications of the world wide web.

His first major engagement came from the founders of the New York Web, a Netscape Beta Company, credited with helping to launch one of the first successfully embraces of e-commerce without human intervention. So, he set out to help define the 'www' as a media property and distribution network.

Engagements have included early adaption of ecommerce, most notably by: Collectors Choice Music & Critics Choice Video (prior properties of Playboy Enterprises). Other assignments included: The Virtual Entertainment Network, American Express, Inner City Broadcasting, ShopFast, Simon and Schuster Publishing, Nike World Games, CBS Sports, and various other institutional giants.

He also played a key participating role with Show Digital, Inc., IntelliSpace, Inc., Advanced Digital Technologies, Inc., Lucent, Inc. Global Crossing, Inc., and Digital Equipment Corporation. These a few of the firms that played key roles in developing infrastructure for internet access to public and private spaces throughout New York City, including hotels, giving rise to the development of lower Manhattan and the New York Information Center.

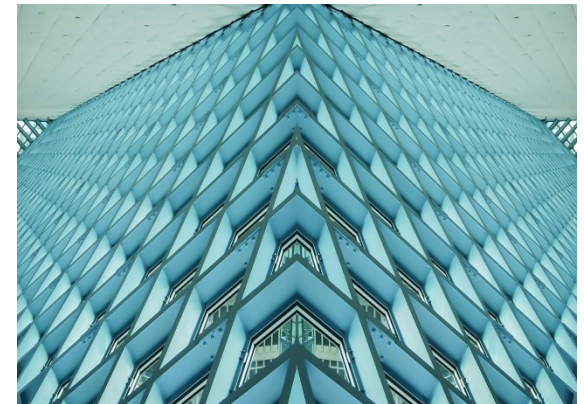
During the mid-1980's, Woody helped found CR2, a communications firm that began creating images to document the rise of emerging technologies for companies across a broad spectrum of industries including: robotics, office automation and telecommunications.



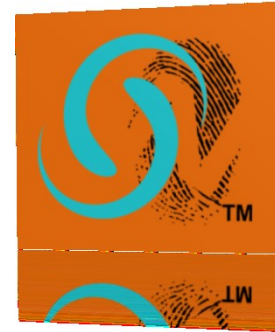
Woody continues to support various humanitarian & environmental projects while campaigning for artificial intelligence for social good.



Woody continues to advocate for methodologies and sustainable models that create positive humanitarian and environmental impact.



Woody actively promotes the values of the Global Impact Investment Network (GIIN) among investors around the world.



**In 2017, Woody produced and launched  
SeeMeFunded.com.**

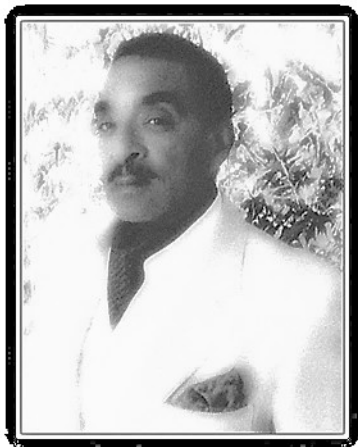
**a collaborative portal sharing priorities and focus with some amazing affiliates, partners and platforms, committed to empowering the growth of social impact investments and helping social innovators in prove their impact and value.**



**Moving at the speed of culture with new ways to empower the moment.**



## ARTIST, ADVOCATE, AND PHILANTHROPIST .



James e. Woody

Founder

“Woody” believes that creativity may in some way spot and depict an approaching new worldview. He seeks to become a catalyst for helping others — the single most powerful and lasting seed of remarkable change!

- **Be Sensitive Studio** ([www.besensitivestudio.com](http://www.besensitivestudio.com))

Abstract Transpersonal Artist

- **Be Sensitive Foundation** ([www.besensitive.org](http://www.besensitive.org))

Campaigning for nonprofits that support under-served gifted & talented Children

- **Be Remarkable Group, Inc.** ([www.beremarkablegroup.co](http://www.beremarkablegroup.co))

Advocates for Social Innovation and the Advancement of Impact Investments

*Thank you*