

INSIDE



Art is Life and Life is Sacred.



BE SENSITIVE ART STUDIO

Private Invitation

The following philanthropists are
art champions with at least one
thing in common.

George Clooney

Melinda Gates

Bill and Hillary Clinton

Ivanka Trump

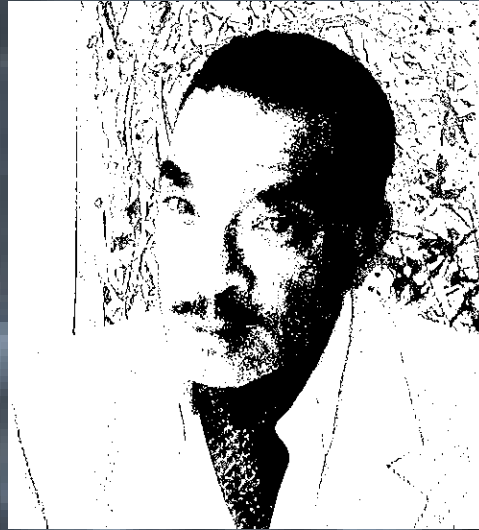
Kerry Washington

Sandra Sandberg

Angela Jolie

Queen Latifah

They all own a Woody Painting



James e. Woody

**One of the world's first proclaimed and recognized Abstract
Transpersonal Expressionist Artist.**



"My paintings are defined as abstract transpersonal expressionism because they allow the viewer a look beyond my own personality."

"When listening at the canvas, I only ask of myself to take the space-time to dwell with the work in its such-ness, making every part of the process a trance inducing play, rather than racing to a foregone conclusion that I hold somewhere in my head."

"I have learned that no part of life or art should be merely rushing without appreciating the journey in its fullness. Every moment is complete in itself."

"With art and life, there is space and opportunity at every phase for invention".

James e. Woody, 2009























Be Sensitive Art Gifting Project

**We help grow awareness and gain support
for the nonprofits and social enterprises you care about.**



OPTION 1

A selection of Woody paintings have been allocated specifically for auction at events and galas that benefit the nonprofit projects and causes.



OPTION 2

You can also contract Woody for a live painting experience and create a special opportunity to leverage relationships with luxury brands relevant to baby boomers to millennials.



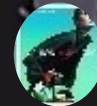
OPTION 3



**We'd like to gift you an original "Woody" painting,
as a demonstration of our appreciation of your support for
Be Remarkable Projects.**

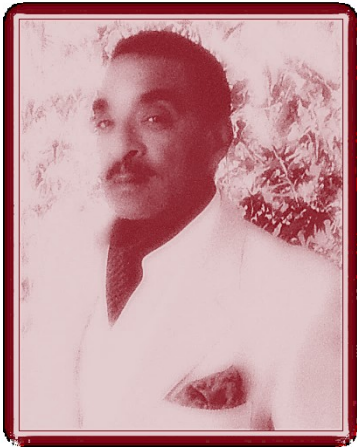
Donations are governed and managed by:

BE SENSITIVE~BE REMARKABLE



JAMES e. WOODY, ARTIST, ADVOCATE AND PHILANTHROPIST

Secure your original Woody painting now: **Art Gifting Program**



Founder

We help grow awareness and gain support for the nonprofits and social enterprises you care about.

- **Be Sensitive Studio** (www.besensitivestudio.com)

Abstract Transpersonal Artist

- **Be Sensitive Foundation** (www.besensitive.org)

Campaigning for nonprofits that support under-served gifted & talented Children

- **Be Remarkable Group, Inc.** (www.beremarkablegroup.com)

Advocates for Social Innovators and Impact Investments

- **Be Remarkable Projects** (www.seemefunded.com)

Crowdfunding & resource portal of social innovators